



FOAM, GLUE, TAPE AND A LITTLE IMAGINATION....



(RC Model Airplane Construction Plans)

rcFoamFighters

MX-1 Wolverine

(Original Design by Jake Marshall - Apr. 2010)

(CAD Drawing by Jake Marshall - May 2010)

Basic Template Release Ver. 1.1

FREE PLAN - NOT TO BE SOLD

(Copyright, rcFoamFighters April 2010)

rcFoamFighters

MX-1 Wolverine Basic Template

(Design by Jake Marshall - Apr 2010)

(CAD Drawing by Jake Marshall - May 2010)

(Basic Template Release 1.1)

(Contact rcFoamFighters at: admin@rcfoamfighters.com)

(Please Visit Our Blog at: <http://rcfoamfighters.com/blog/>)

(Copyright, Jake Marshall / rcFoamFighters April 2010)

Basic Specs as built by rcFoamFighters:

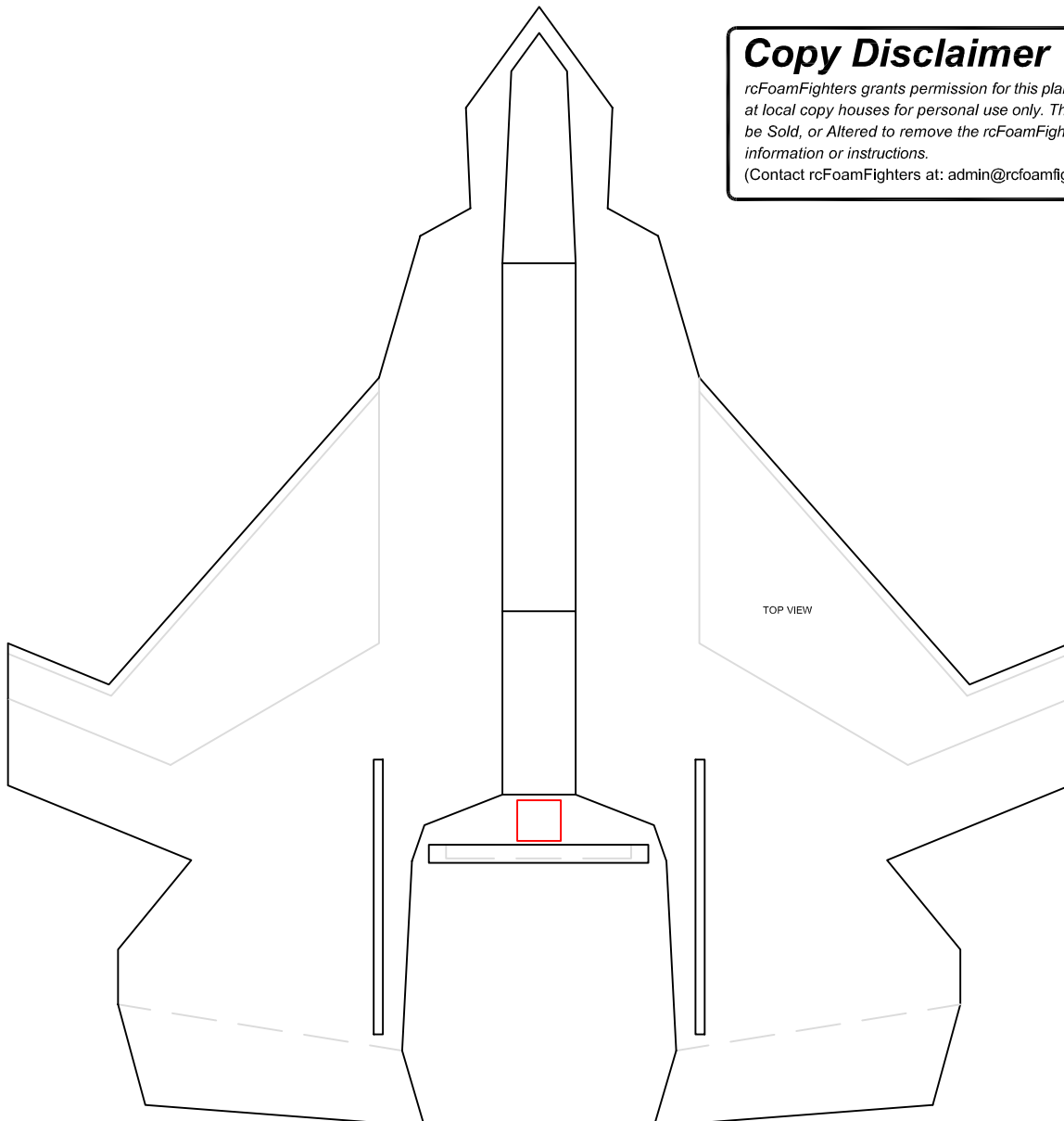
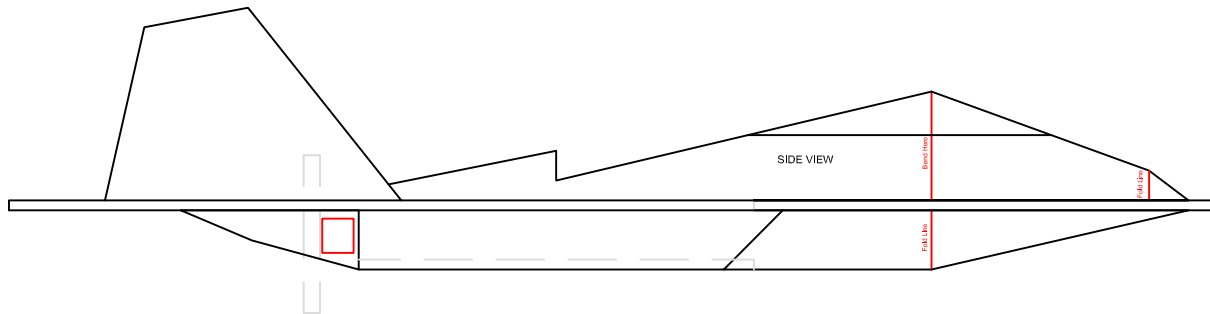
Wingspan: 29 Inches (73.66cm)

Length: 30.56 Inches (77.62cm)

All Up Weight (AUW): 25oz. (708.75gms)

Est. Top Speed: 75mph (120.68kph)

Note, weight and top speed may vary depending on materials, motor, battery and electronics used. The weight given here is based on the model rcFoamFighters made using Foamboard.



Copy Disclaimer

rcFoamFighters grants permission for this plan to be copied at local copy houses for personal use only. This plan may not be Sold, or Altered to remove the rcFoamFighters contact information or instructions.

(Contact rcFoamFighters at: admin@rcfoamfighters.com)

Recommend Parts:

BASIC SETUP (50+mph)

Motor: Suppo A2212/6 2200kV Brushless Motor
ESC: Suppo 30A Brushless ESC
Prop: APC 6x4
Battery: 2200mA (25C or better recommended)
Servos: 2 Each Micro Metal Gear
Radio & Receiver: Any 6-channel or better (2.4ghz preferred)

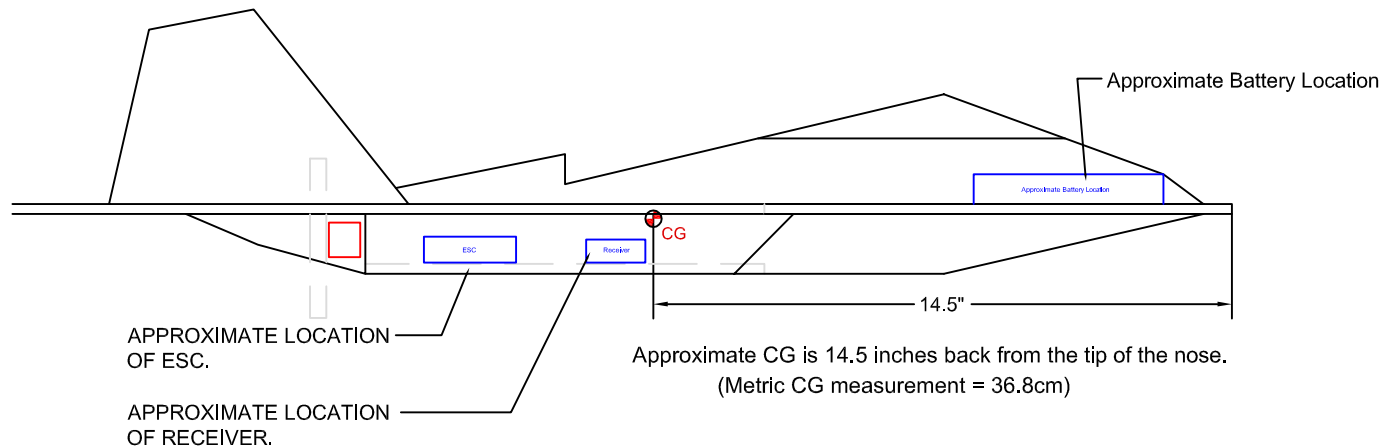
PERFORMANCE SETUP (70+mph)

Motor: Grayson Hobbies "Super Mega Jet" 2550kV Motor
ESC: 40A Brushless ESC
Prop: APC 6x5.5
Battery: 2200mA (30C recommended)
Servos: 2 Each Micro Metal Gear
Radio & Receiver: Any 6-channel or better (2.4ghz preferred)

Plane was originally designed to be made from 2 0x30 Sheets of Foamboard.
Depron or FanFold Foam with Carbon Spars may be used .

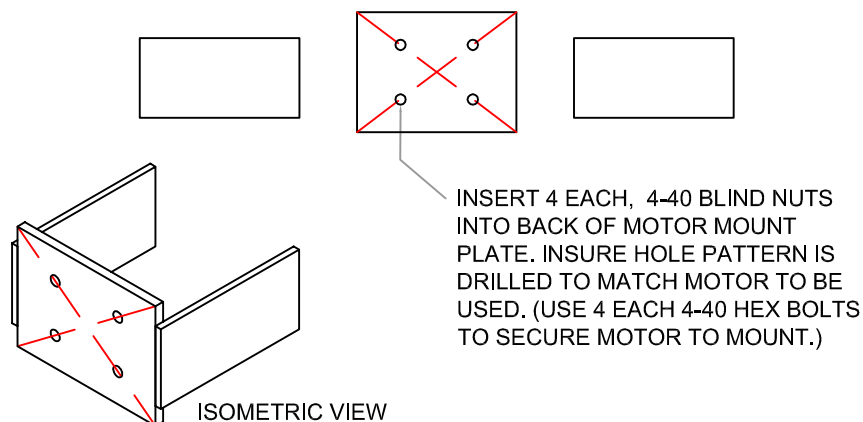
Disclaimer (Please Read):

- This is a design template for a high performance, high speed RC aircraft. This plane should only be built and flown by experienced pilots with adequate skill to fly fast, maneuverable planes.
- **DO NOT fly this plane where it can endanger people, livestock or property.**
- **ANY PERSONS DECIDING TO BUILD AND FLY THIS PLANE DOES SO AT HIS/HER OWN RISK AND LIABILITY. RCFOAMFIGHTERS ASSUMES NO RESPONSIBILITY FOR THE PERFORMANCE OF THIS PLANE.**
- This plane should only be launched via the side launch method. Do not attempt to launch from the top or bottom of the fuselage. Doing so can cause **EXTREME BODILY HARM** if any hand or body part comes into contact with the fast spinning propeller.
- All minors should fly under the supervision of an adult or guardian.



SCRATCH BUILT BASSWOOD MOTOR MOUNT (MADE FROM 1/8" SHEETS) (DRAWING NOT TO SCALE)

Motor Mount is 1.5" x 2" (Make 2)
Arms are 1" x 2" (Make 2)
Balsawood or Basswood Construction

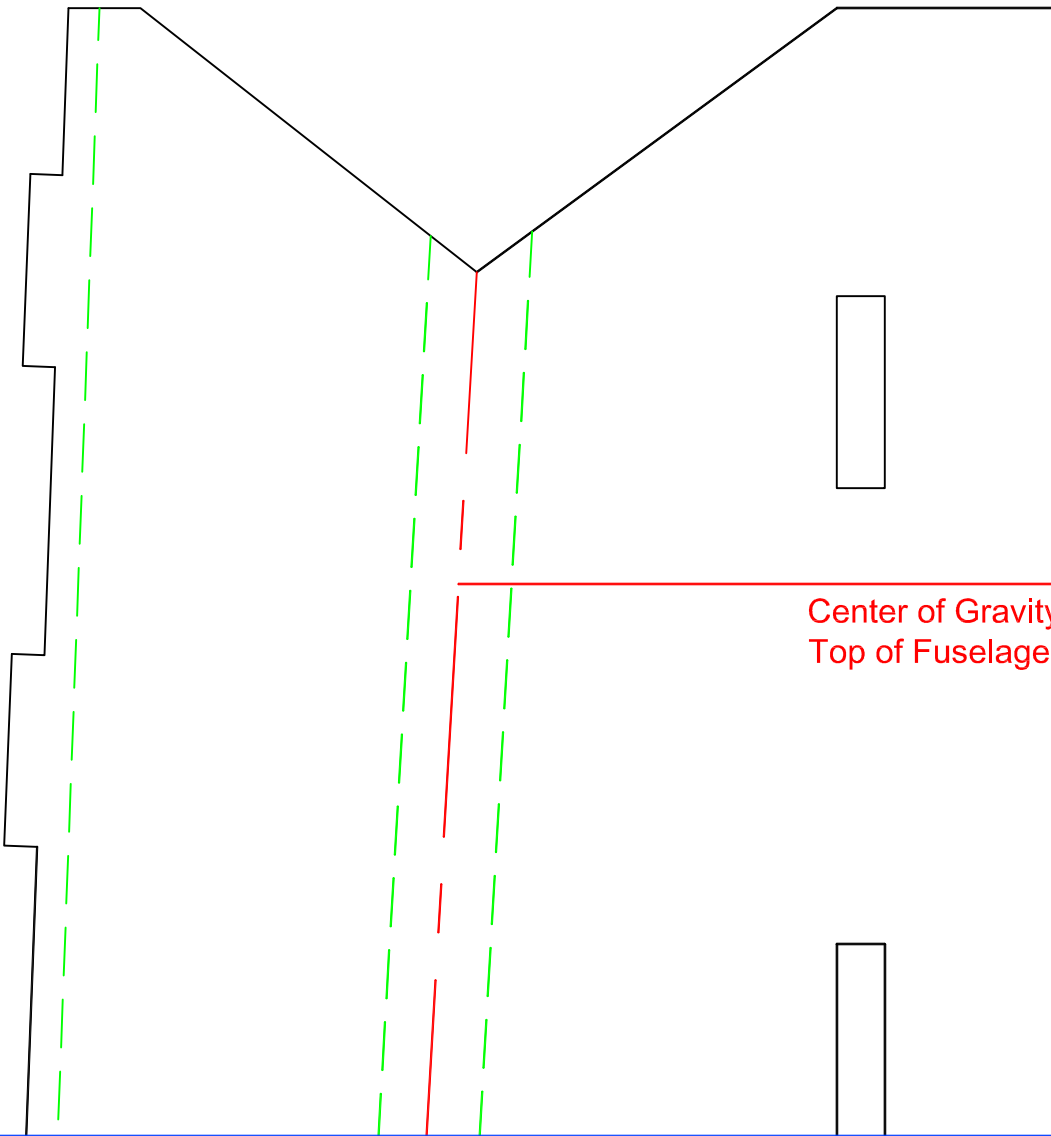
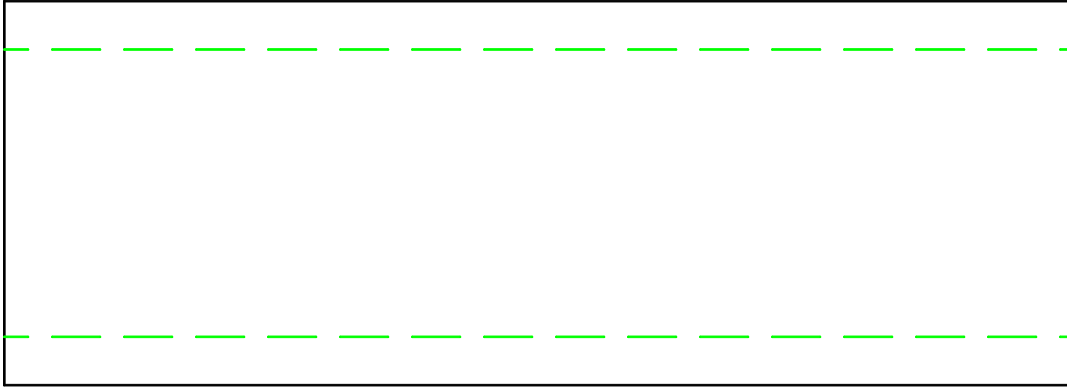




WOLVERINE

WOLVERINE

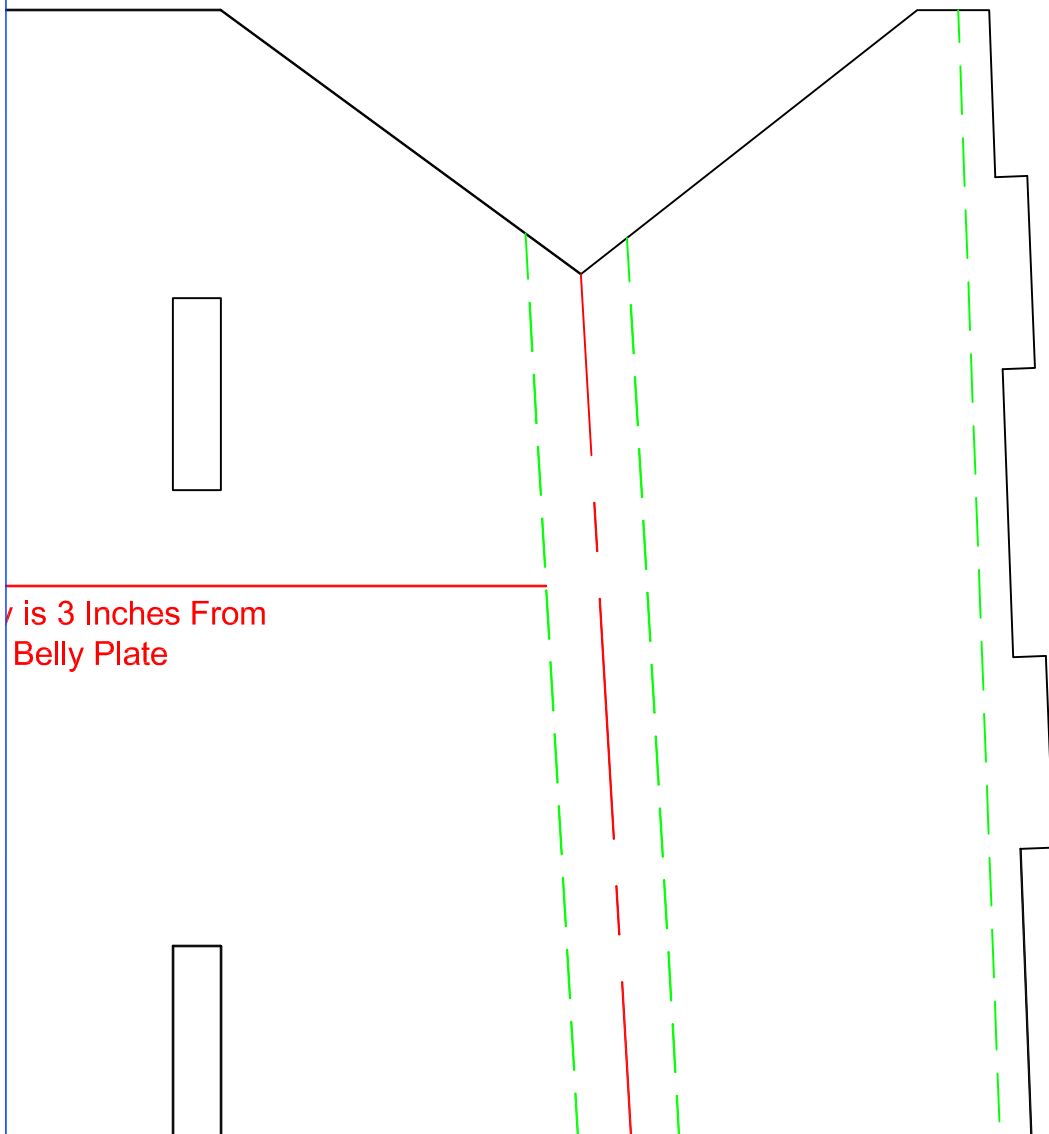
P 1



P2

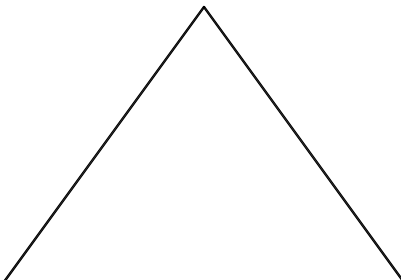
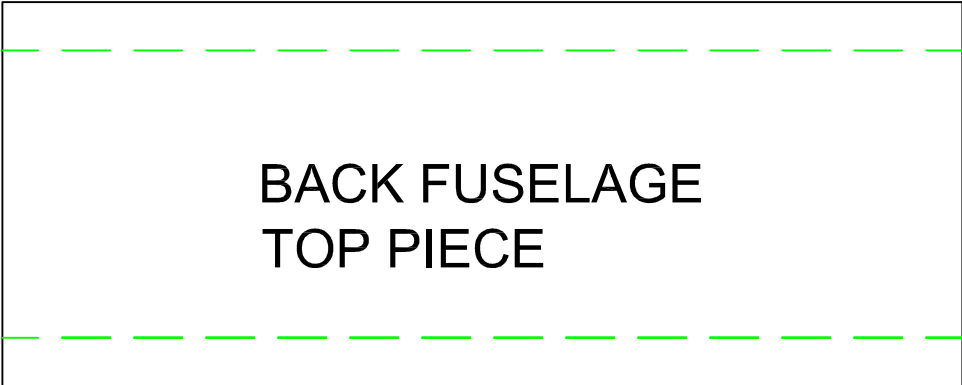
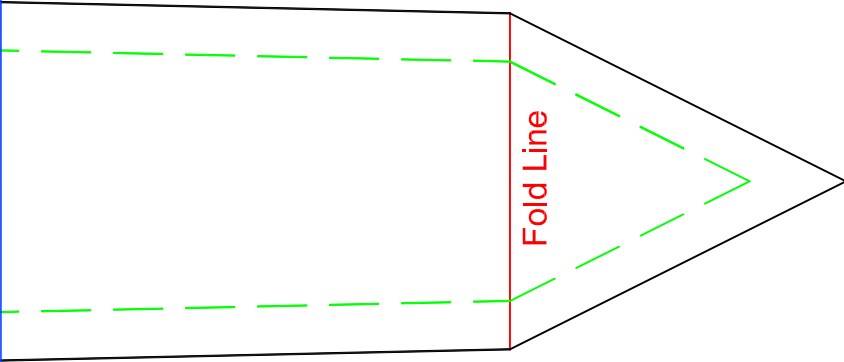
MAIN FUSELAGE TOP
PIECE ADJUST
LENGTH IF NEEDED...

Fold Line

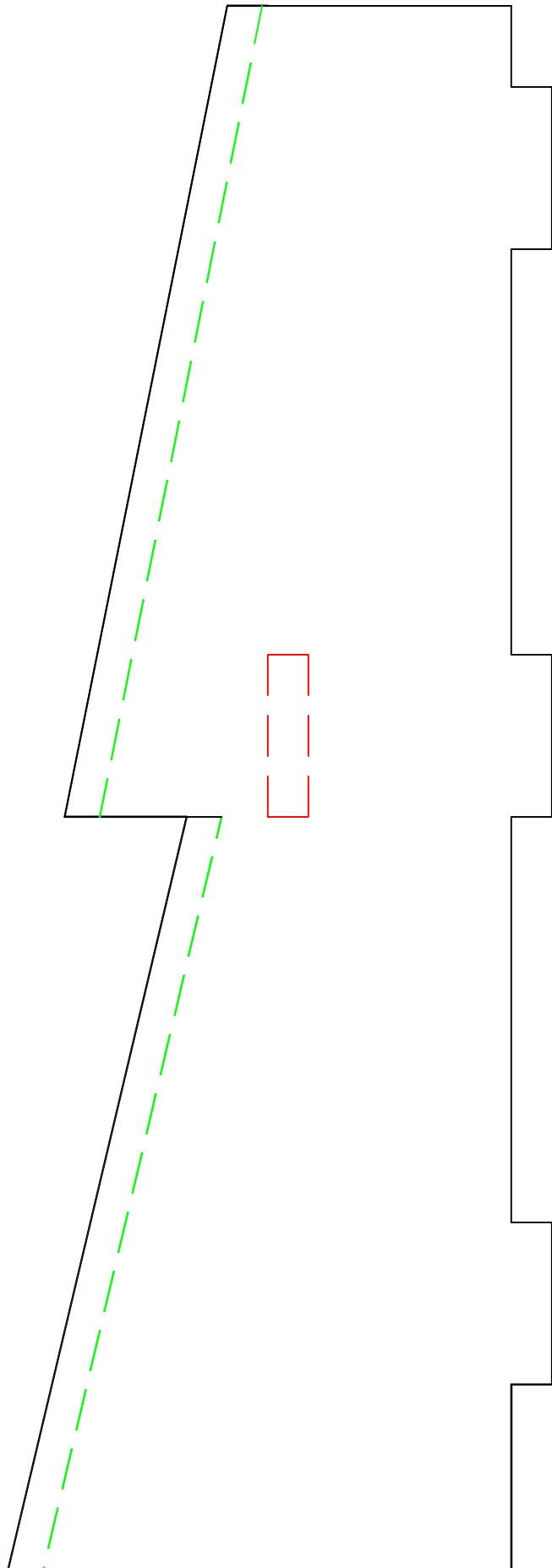


is 3 Inches From
Belly Plate

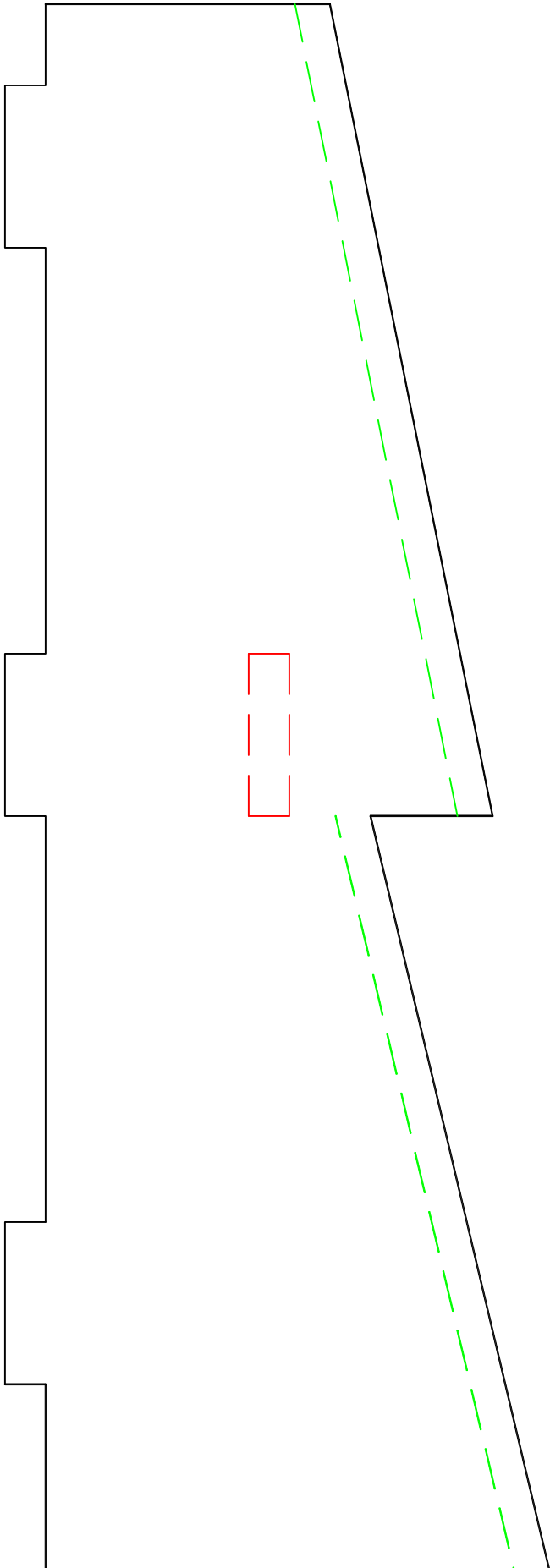
P3



P4



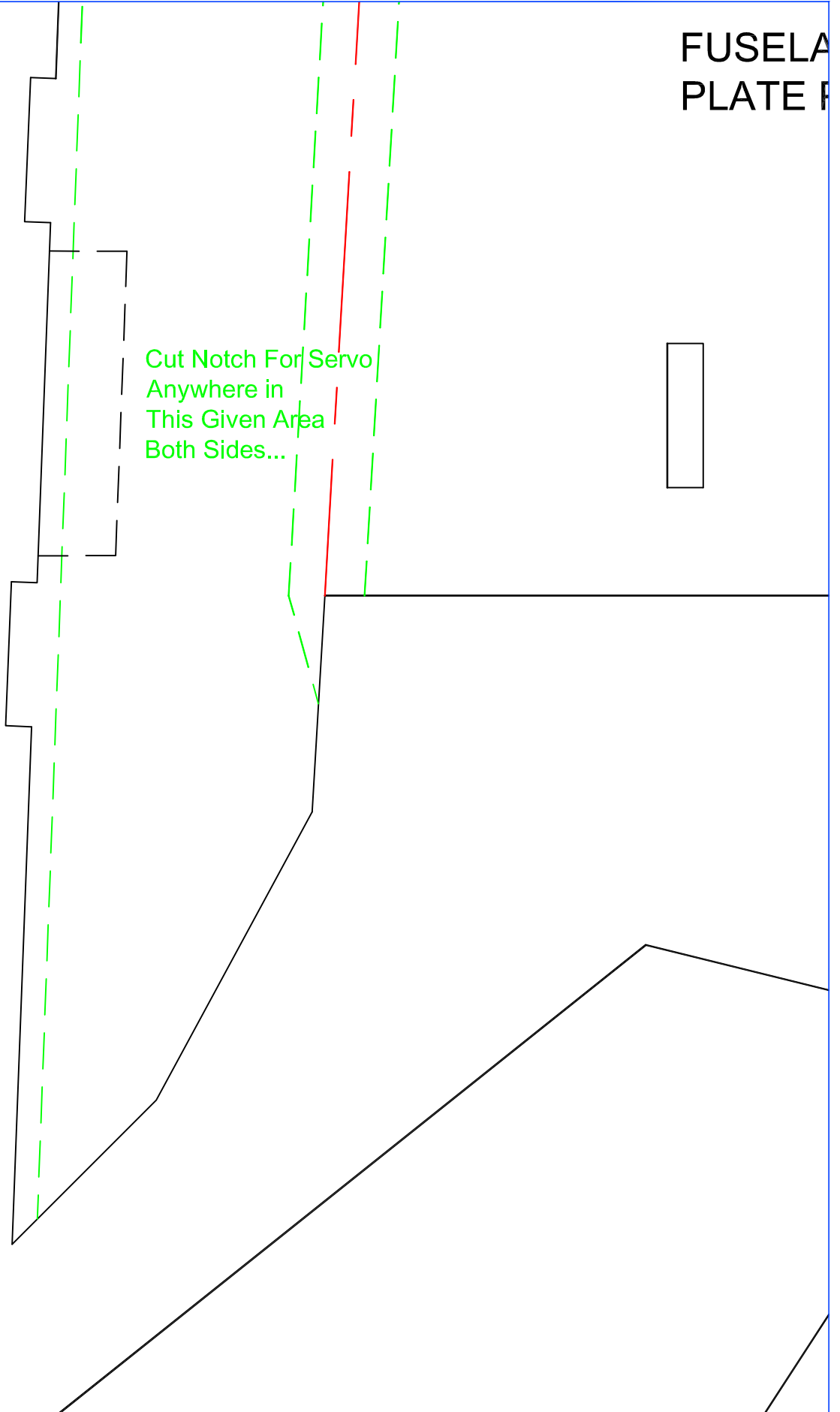
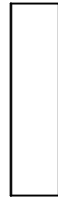
P5



FUSELA
PLATE P

P6

Cut Notch For Servo
Anywhere in
This Given Area
Both Sides...



AGE BELLY
PIECE



Cut Notch For Fuselage
On This Side
For All 6 Slots



P8



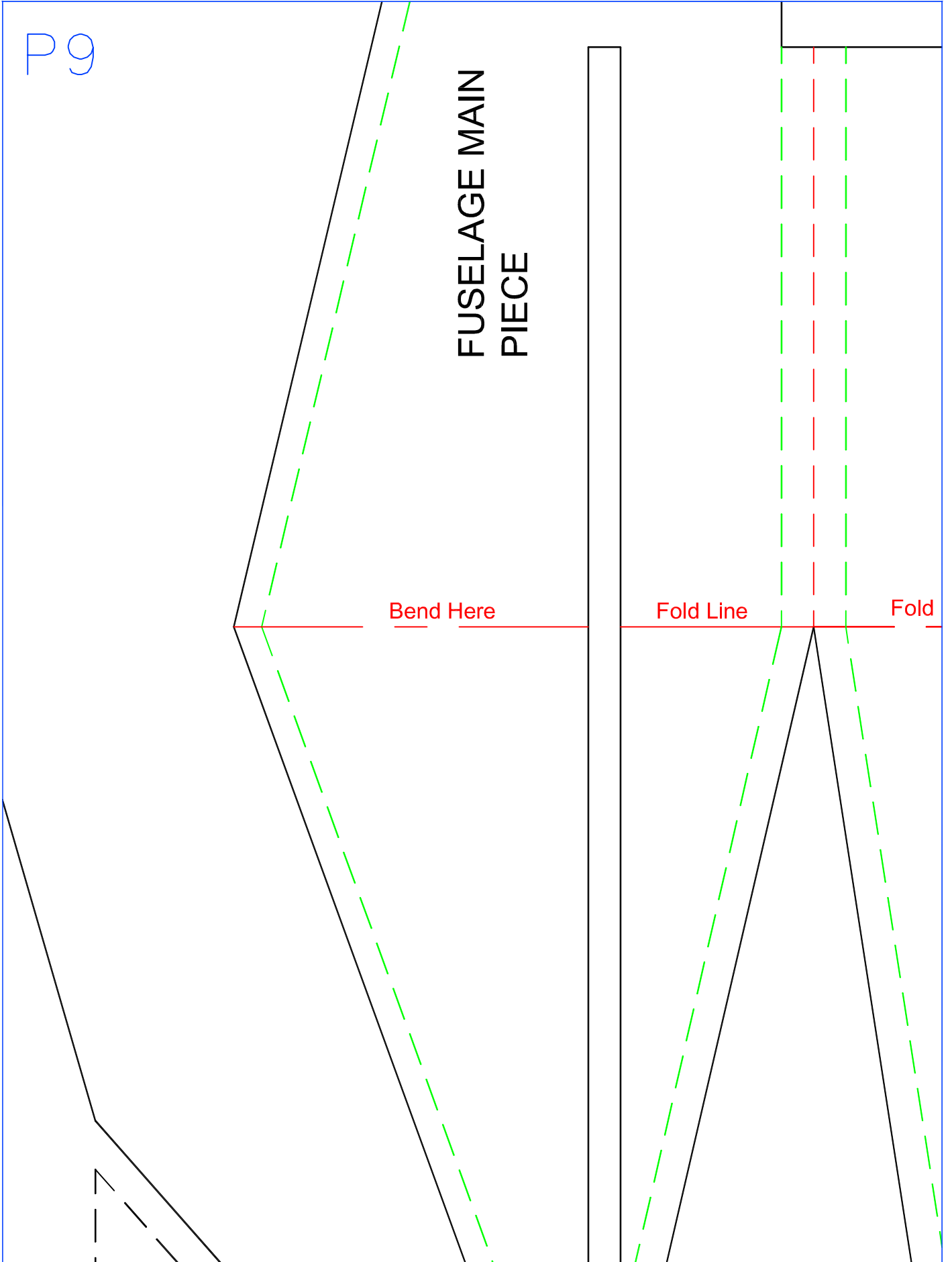
Use Velcro To Attach Battery or
Create Battery Tray To Accomodate
Your Setup

FUSELAGE MAIN
PIECE

Bend Here

Fold Line

Fold



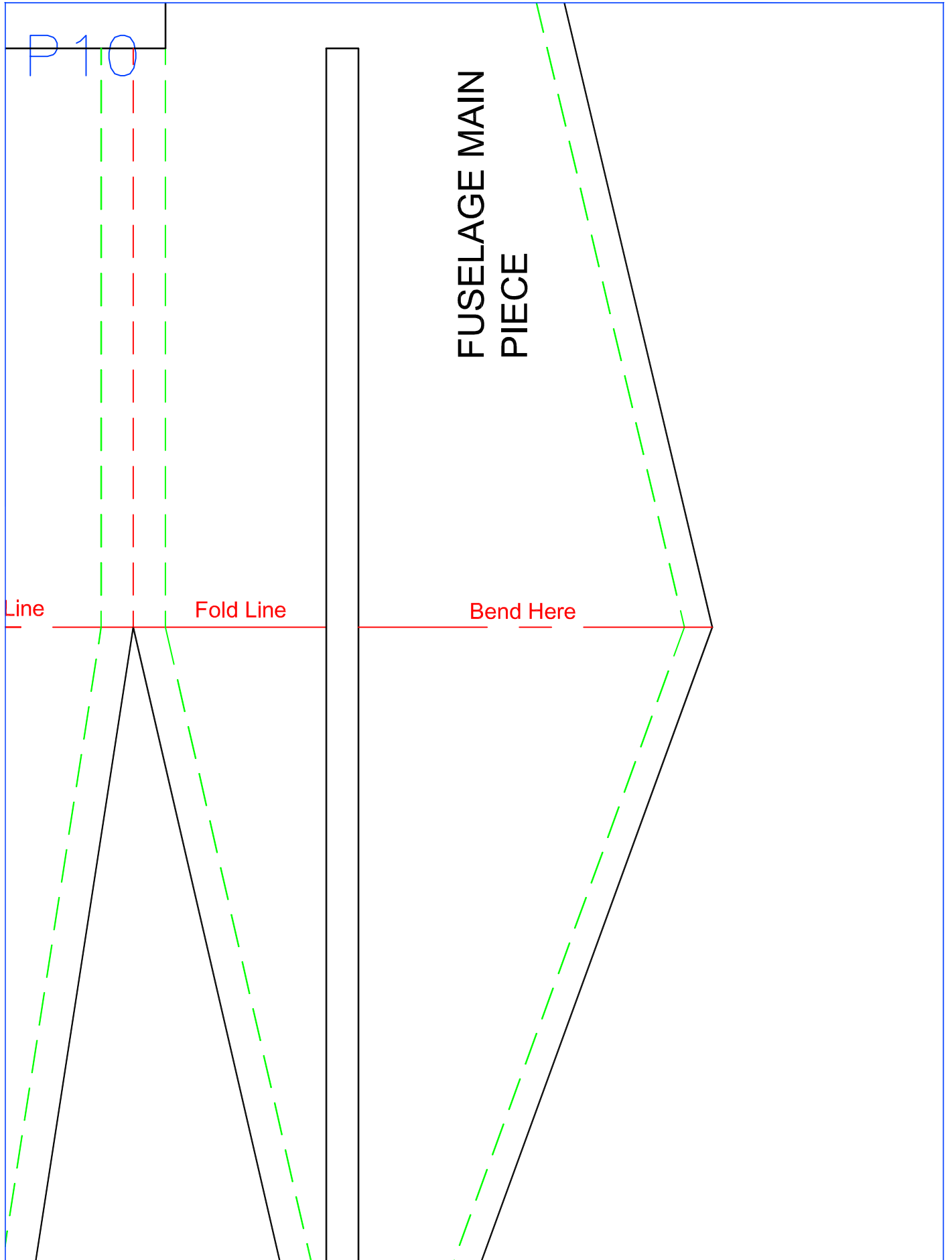
P 10

FUSELAGE MAIN
PIECE

Line

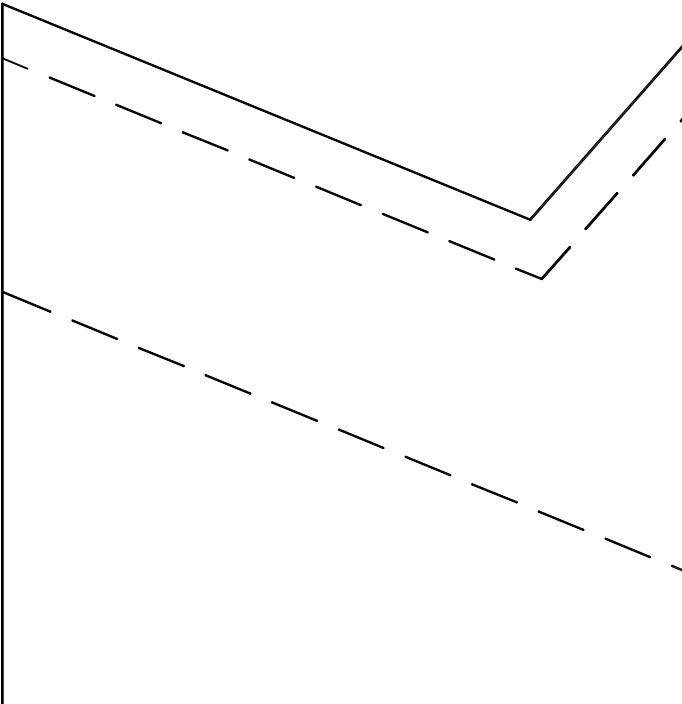
Fold Line

Bend Here



P 1 1

KFM2 Airfoil Piece
(Make 2ea)



P12

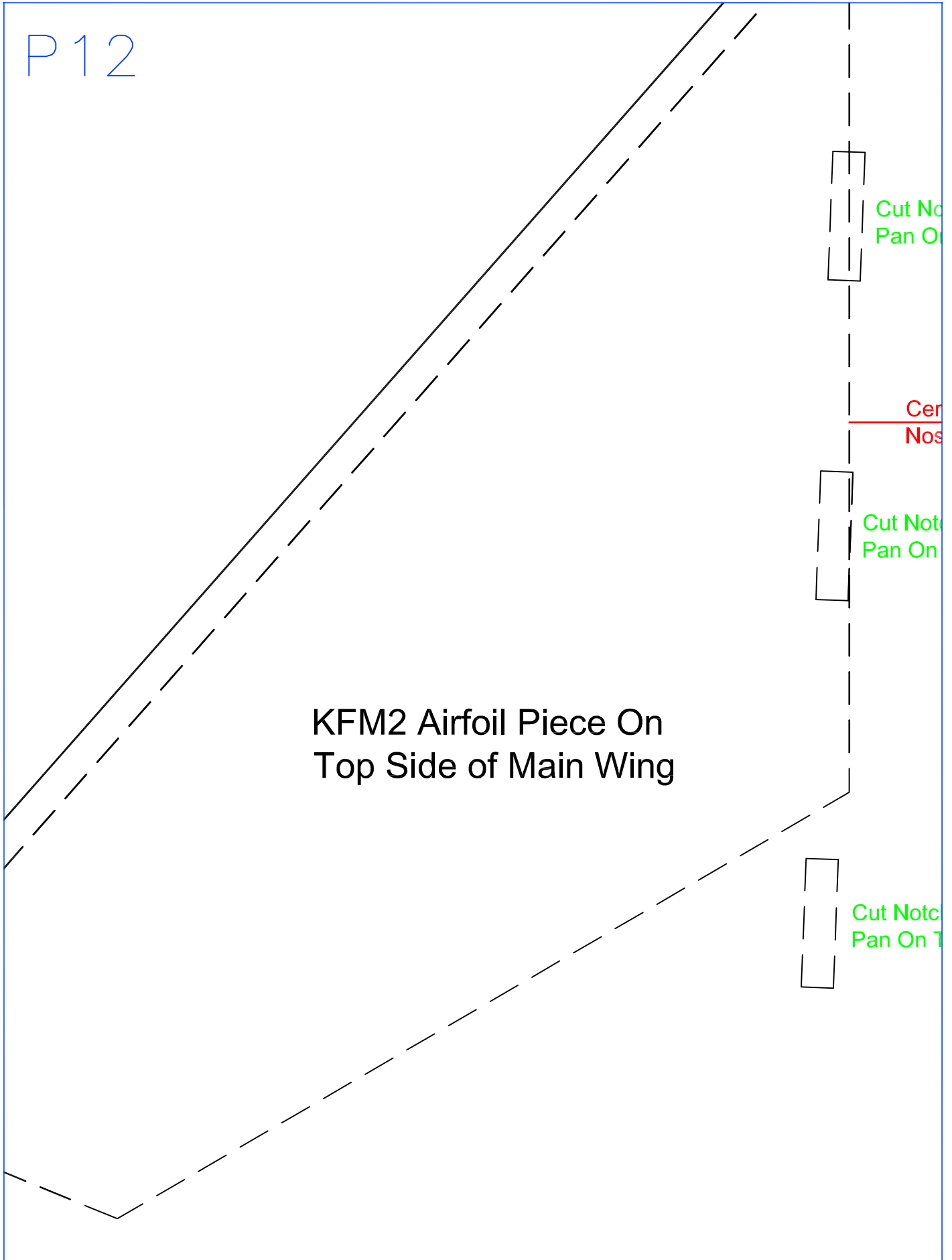
KFM2 Airfoil Piece On
Top Side of Main Wing

Cut No
Pan On

Cer
Nos

Cut Note
Pan On

Cut Note
Pan On T



P13

Notch For Belly
on This Side

Cut Notch For
Pan On This

Center of Gravity 14.5 Inches From
Rear of Plane

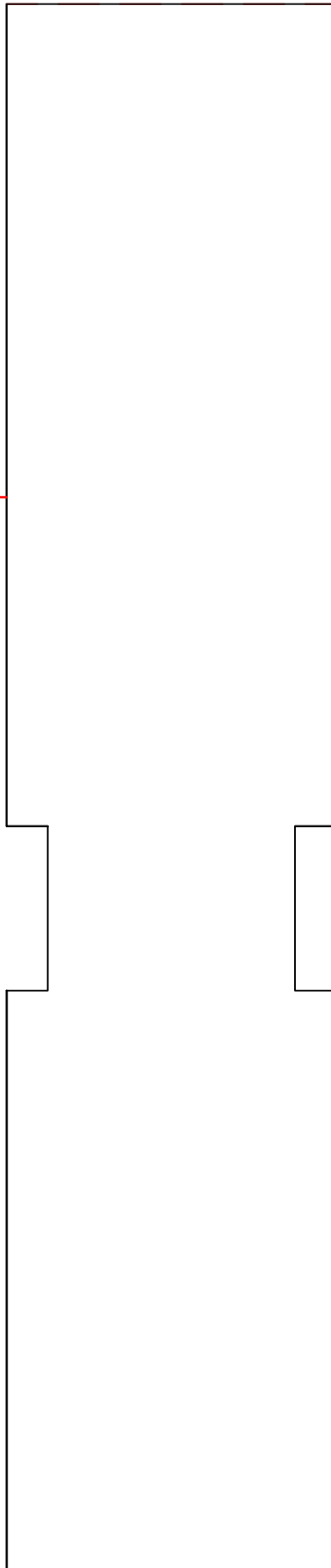
Center of Gravity 14.5 Inches
From Nose of Plane

Notch For Belly
on This Side

Cut Notch For
Pan On This

Notch For Belly
on This Side

Cut Notch
For Pan On This



P 14

Fold Line

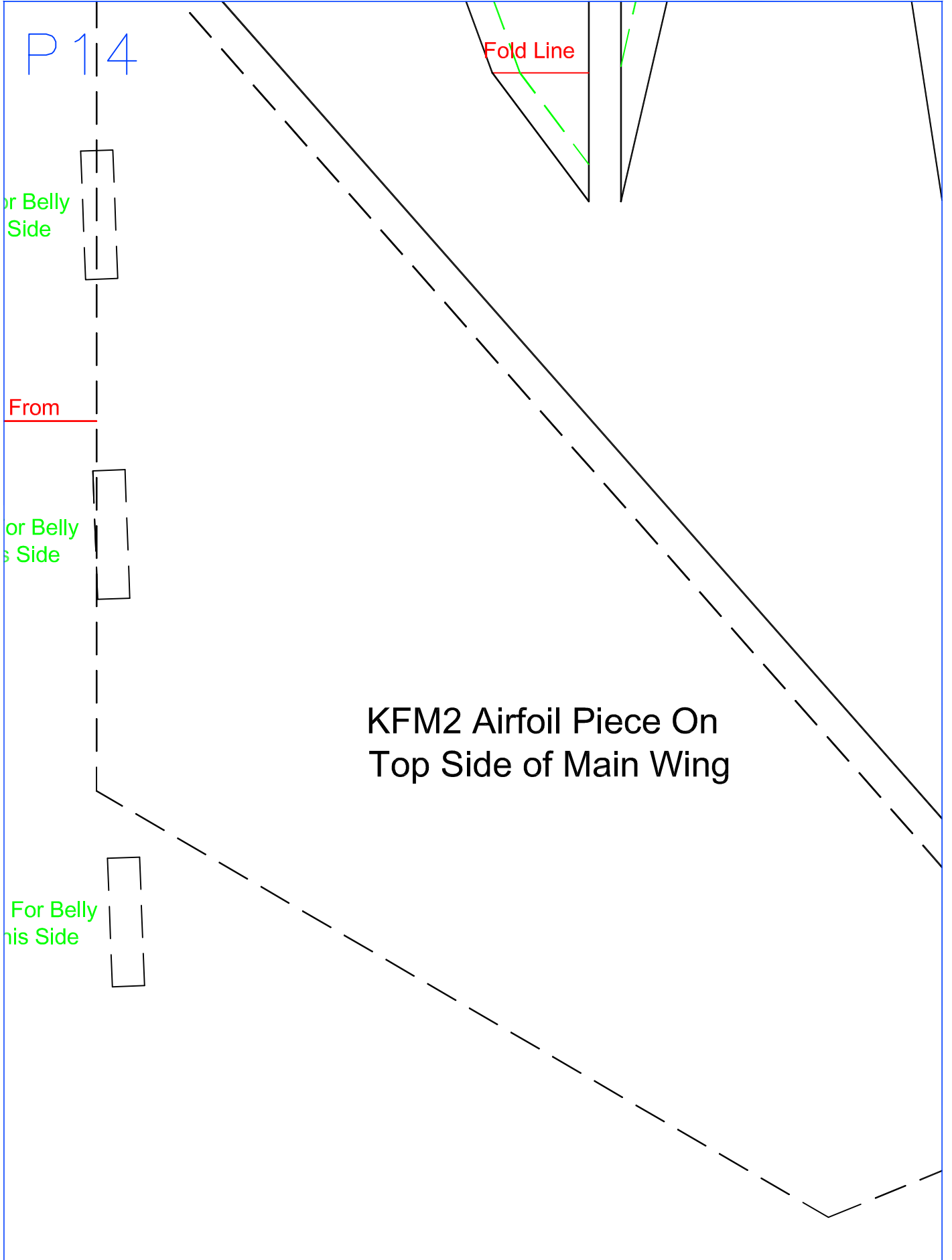
For Belly Side

From

For Belly Side

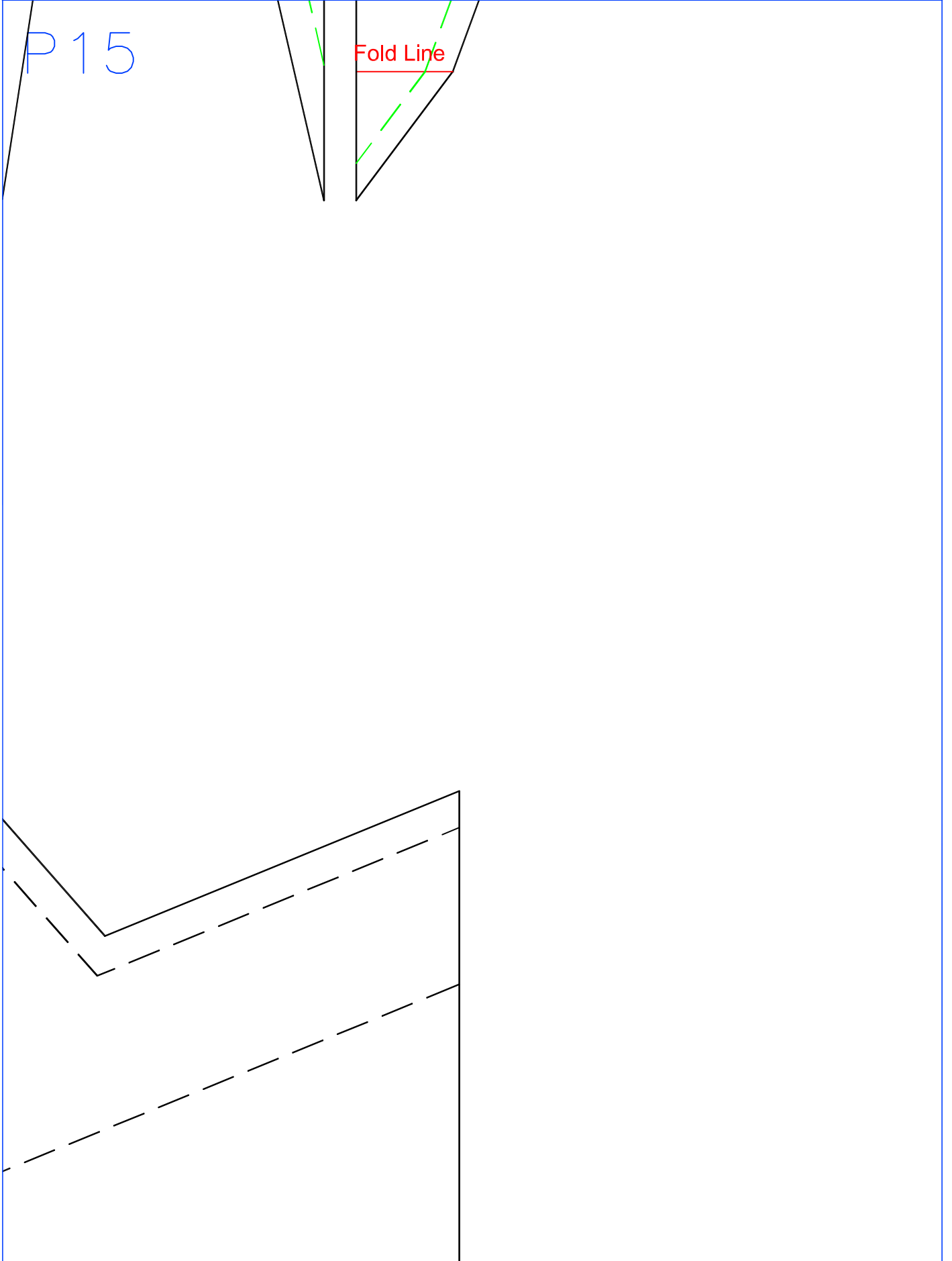
For Belly Side

KFM2 Airfoil Piece On
Top Side of Main Wing



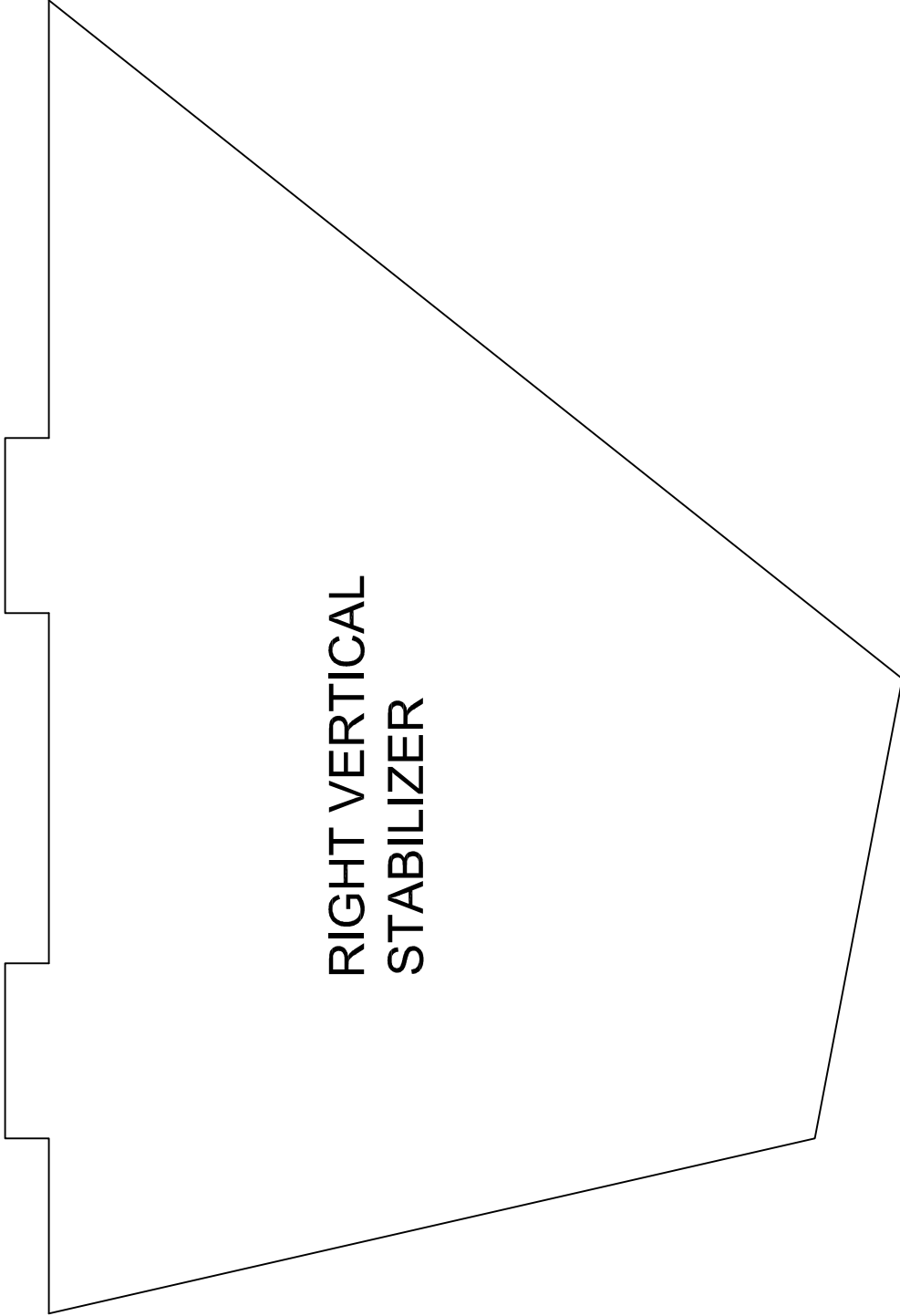
P15

Fold Line



P 16

**RIGHT VERTICAL
STABILIZER**

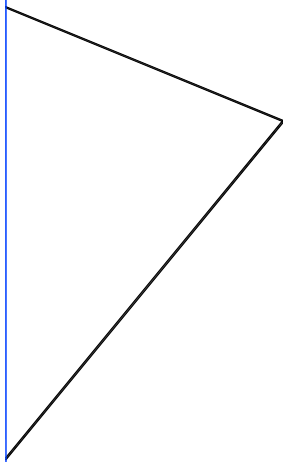


P17

MAIN WING PIECE



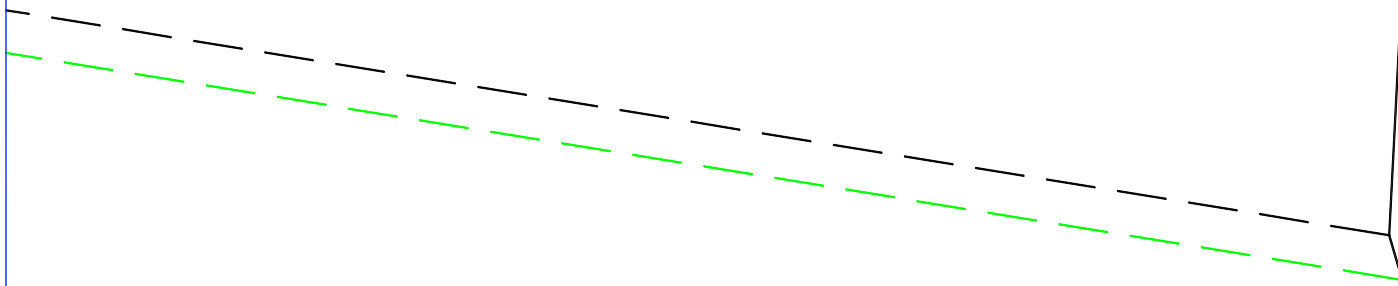
Cut Notch
Pan On Th



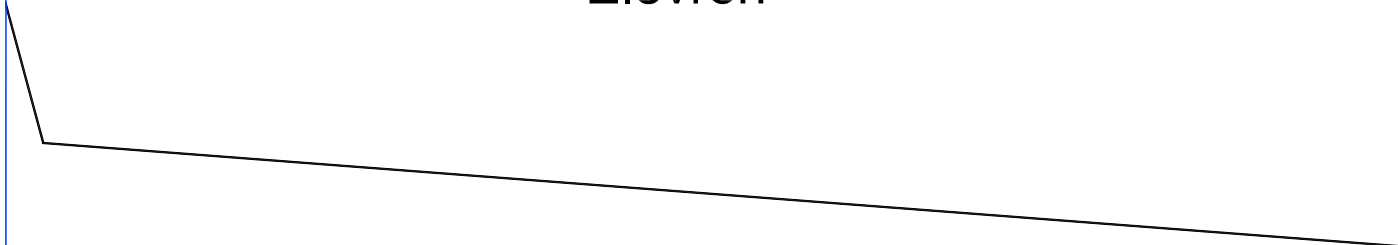
Cut Notch For Tail Fin
On Opposite Side



Cut Notch For Tail Fin
On Opposite Side



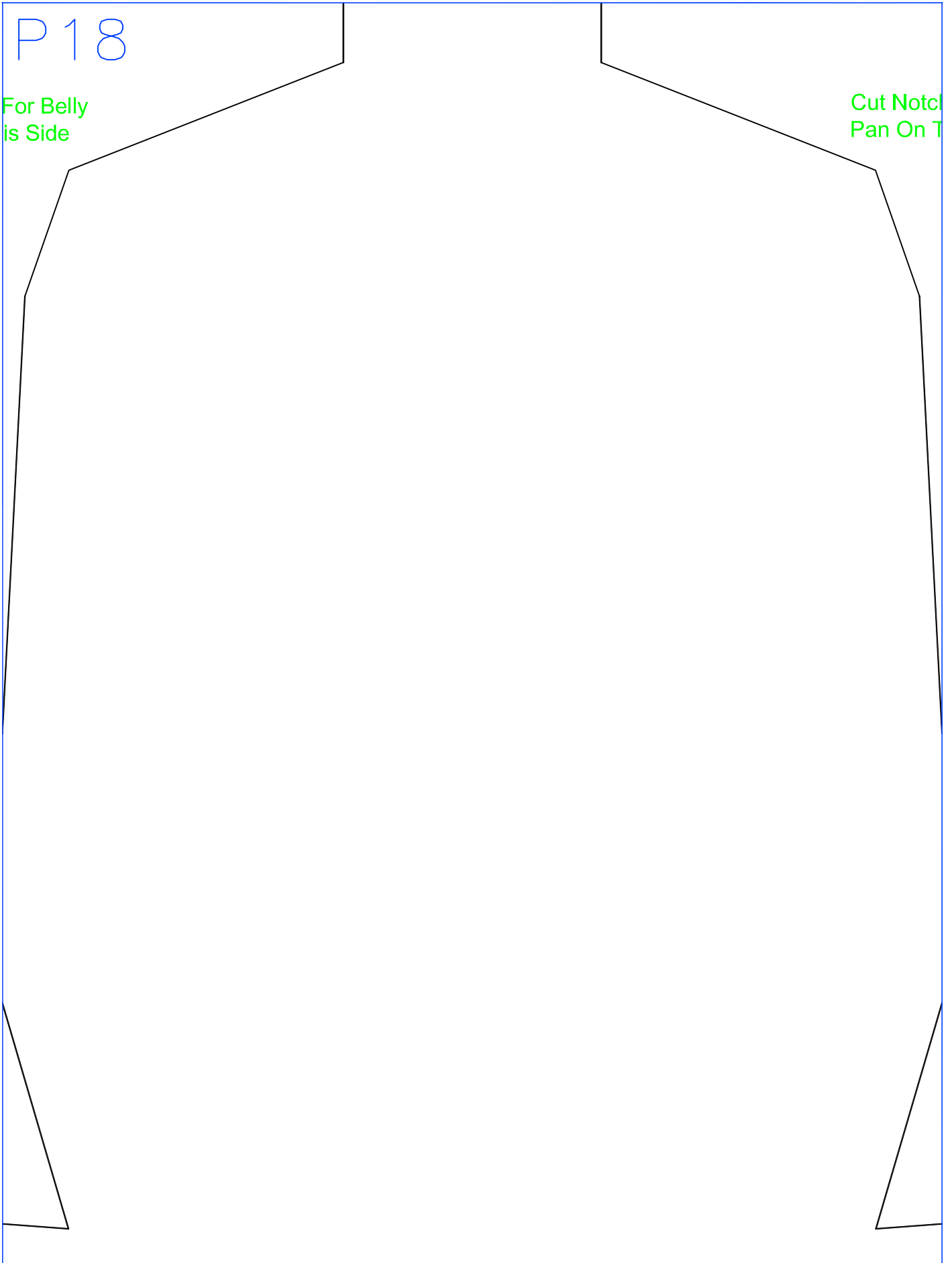
Elevron



P18

For Belly
is Side

Cut Notch
Pan On T



P19

MAIN WING PIECE

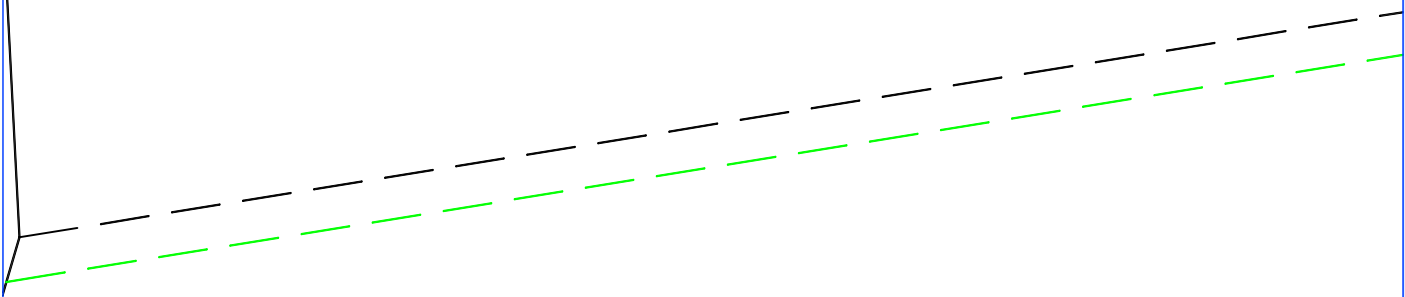
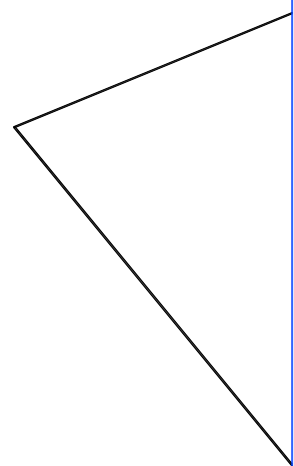
For Belly
This Side



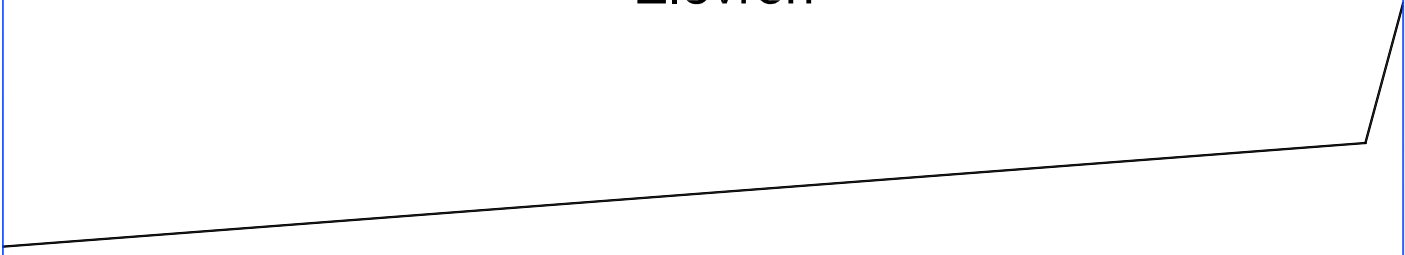
Cut Notch For Tail Fin
On Opposite Side



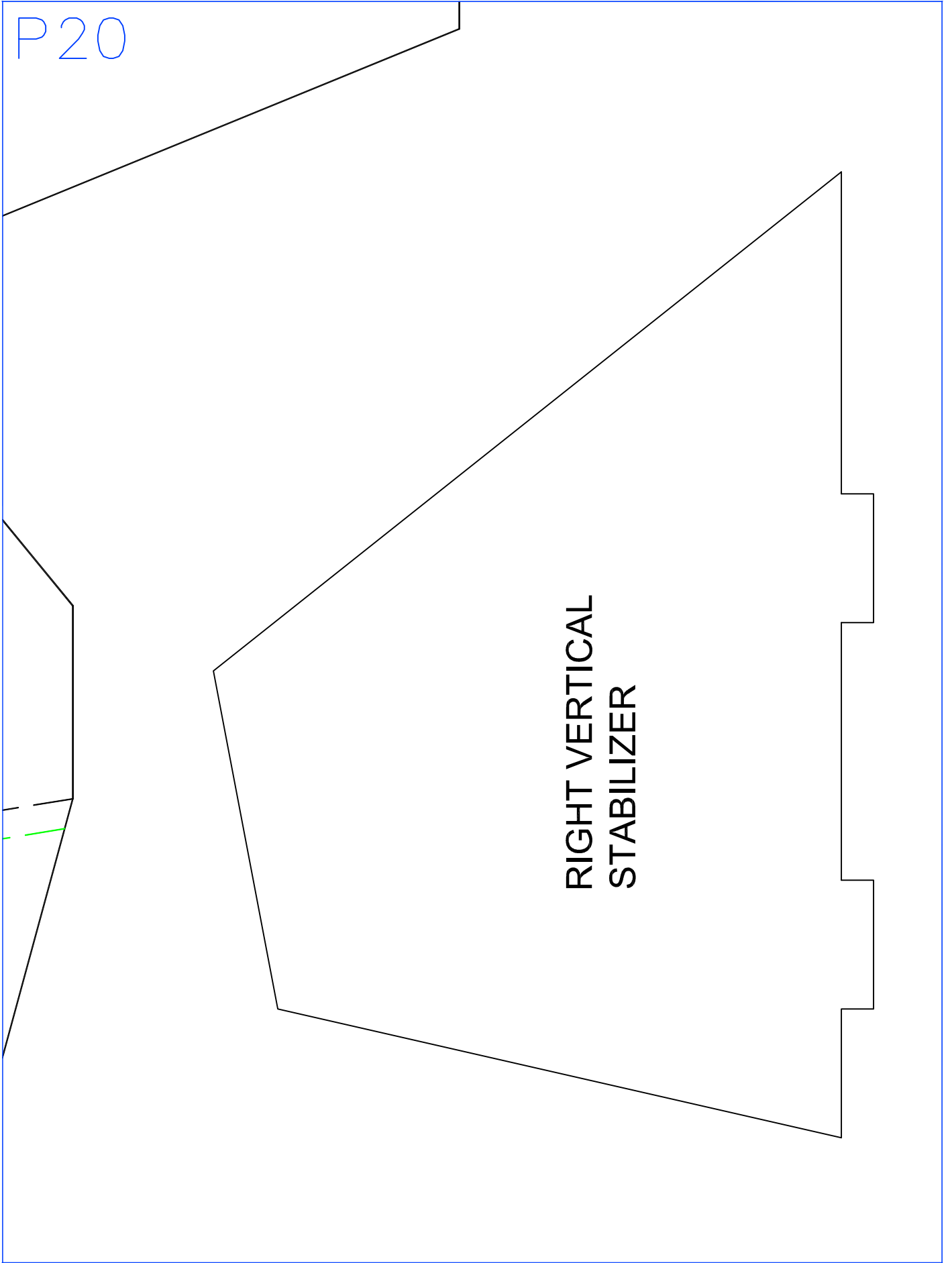
Cut Notch For Tail Fin
On Opposite Side



Elevon



P20



RIGHT VERTICAL
STABILIZER